

Caretronic

Developer and manufacturer of the most advanced information-communication solutions for health-care market



Country of origin

Capital: Ljubljana

Population: 2.066 million (2017) Eurostat

Currency: Euro

Member of EU

Neighbouring countries: Austria, Italy, Hungary, Croatia



- Small country with export oriented economy.
- Slovenian companies are highly reliable and efficient suppliers and subcontractors.
- Slovenia boasts exceptional levels of expertise and knowledge.
- Slovenian companies strive for innovation and excellence of their products, thus maintaining the trust of consumers in the quality of Slovenian brands.

Caretronic

Developer and manufacturer of advanced ICT solutions for health-care market

- Established in 1991 with roots in 1962.
- More than 100.000 users
- More than 35 international markets
- ISO 9001:2015
- DIN VDE 0834 part I and II
- Platinum creditworthiness AAA – among top 3,7 % companies in Slovenia
- Excellent SME – internationally acknowledged credibility of company, recognized by Chamber of Commerce Slovenia



Caretronic

Offices

Caretronic Inc.

Chicago
USA

Caretronic GmbH

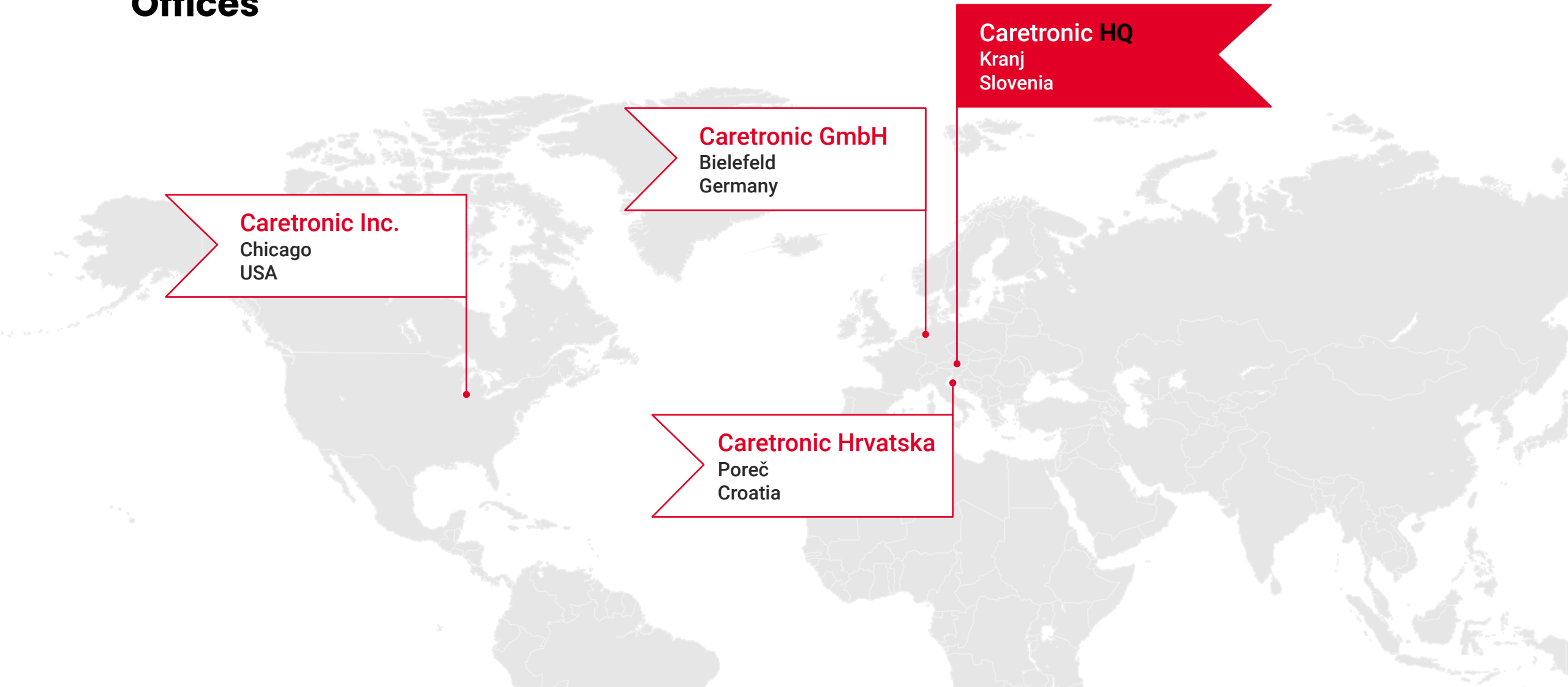
Bielefeld
Germany

Caretronic Hrvatska

Poreč
Croatia

Caretronic HQ

Kranj
Slovenia



Reference list

Some of the countries with our system installed



ITM Exporter of the year 2020

In 2020 we have become ITM exporter of the year.

Take a look at the video here:

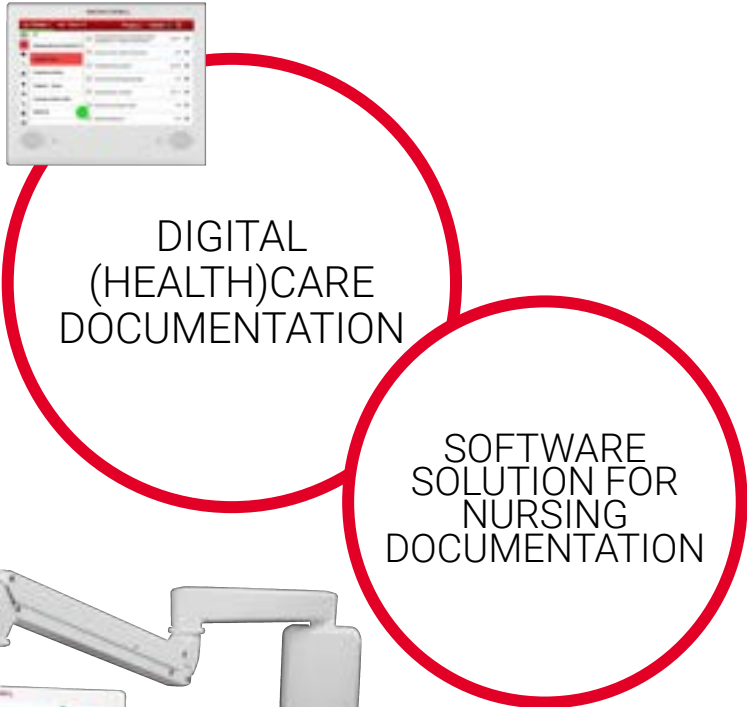


Solutions



IP NURSE CALL SYSTEM

This diagram illustrates an IP Nurse Call System. It features a central red circle containing the text "IP NURSE CALL SYSTEM". Surrounding this circle are various components: a smartphone displaying a call interface, two white call stations with buttons, a desktop monitor showing a software interface with colorful icons, a laptop displaying a "Help 1 36" message, and a white call button with a red light.



DIGITAL (HEALTH)CARE DOCUMENTATION

SOFTWARE SOLUTION FOR NURSING DOCUMENTATION

This diagram shows two overlapping red circles. The top circle is labeled "DIGITAL (HEALTH)CARE DOCUMENTATION" and contains a laptop displaying a software interface. The bottom circle is labeled "SOFTWARE SOLUTION FOR NURSING DOCUMENTATION" and contains a tablet displaying a software interface with colorful icons.



RTLS AND DEMENTIA SYSTEM

This diagram features a green circle containing the text "RTLS AND DEMENTIA SYSTEM". To the left of the circle is a small white sensor device. Below the circle is a black wristband with a white sensor and a red light.



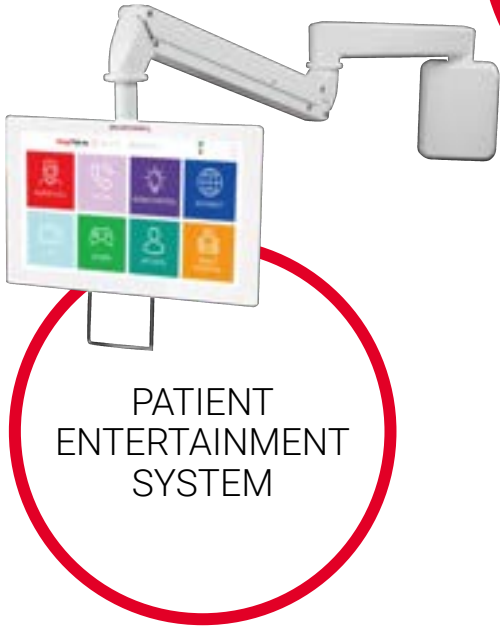
FALL PREVENTION SYSTEM

This diagram features a green circle containing the text "FALL PREVENTION SYSTEM". To the right of the circle is a white sensor device. Below the circle is a white medical device with a red sensor and a red light.



SMART TELECARE AND TELEHEALTH SYSTEM

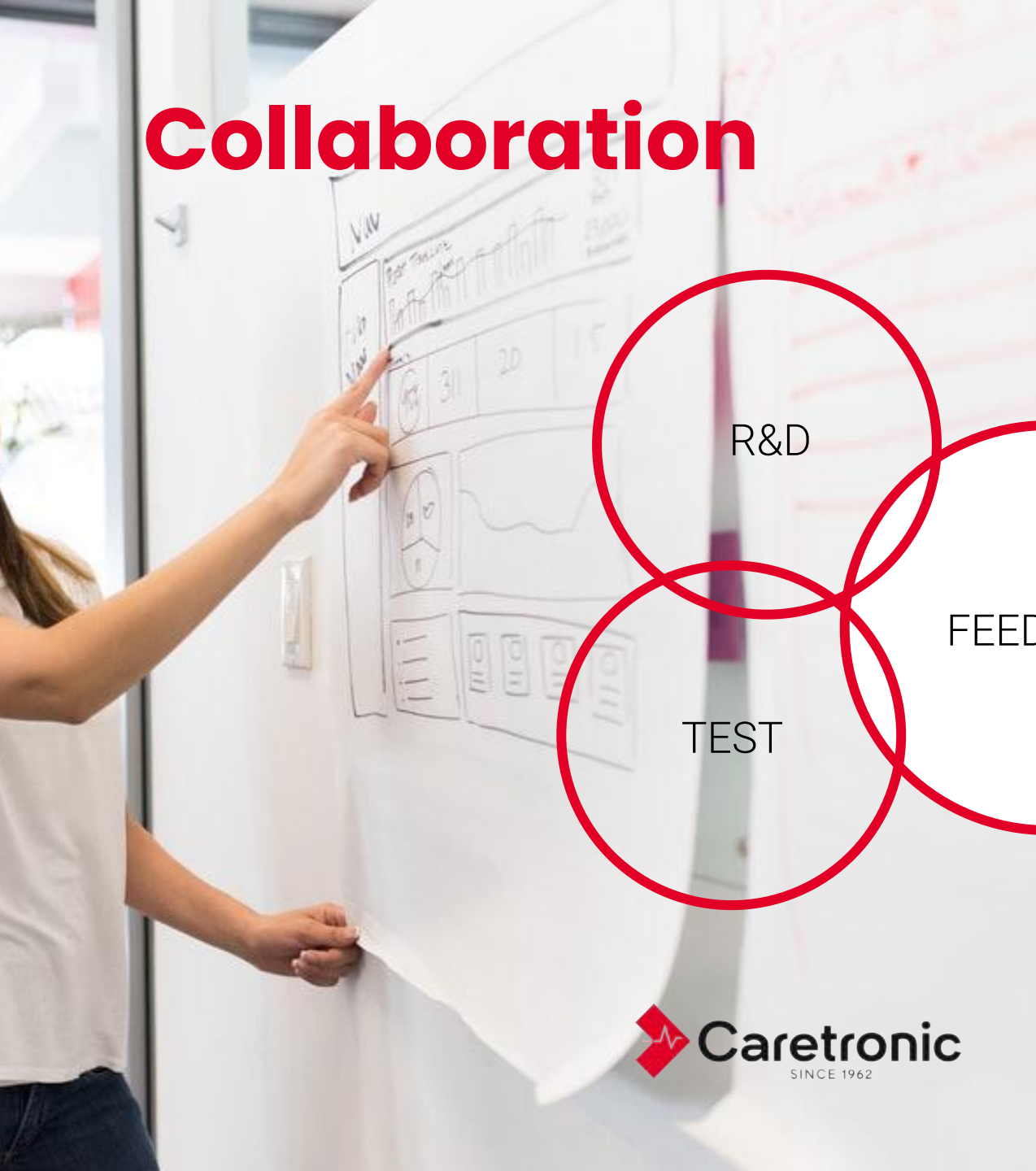
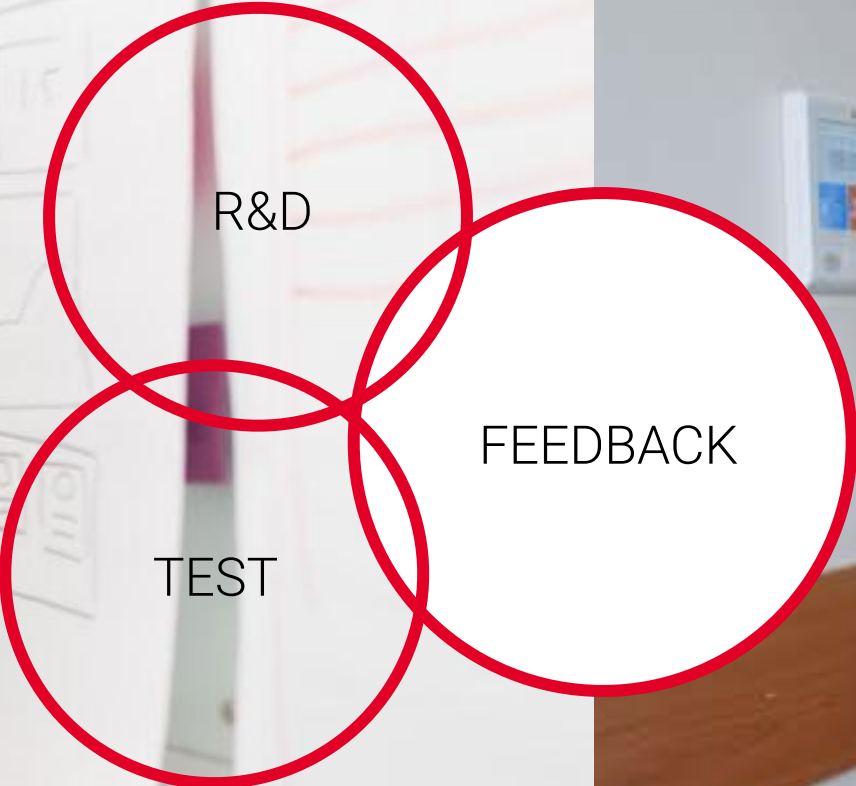
This diagram features a blue circle containing the text "SMART TELECARE AND TELEHEALTH SYSTEM". To the left of the circle is a white tablet displaying a software interface with colorful icons. To the right of the circle is a black wristband with a white sensor and a red light.



PATIENT ENTERTAINMENT SYSTEM

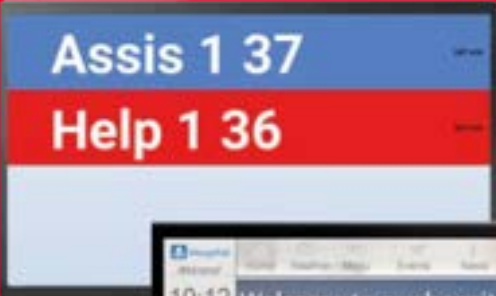
This diagram features a red circle containing the text "PATIENT ENTERTAINMENT SYSTEM". To the left of the circle is a white tablet displaying a software interface with colorful icons. To the right of the circle is a white robotic arm holding a tablet.

Collaboration



Solutions

**IP
NURSE CALL
SYSTEM**



Most flexible and modular IP Nurse Call System

WIRED
with call buttons

Can be mixed

WIRELESS
with call buttons

Can be mixed

WIRELESS
with security
wristband

ENTRY LEVEL



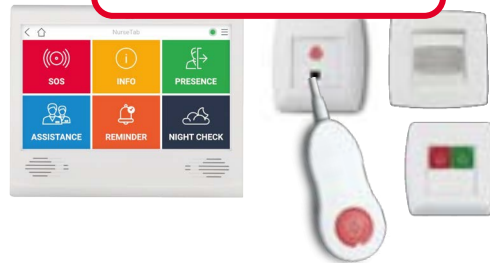
ENTRY LEVEL



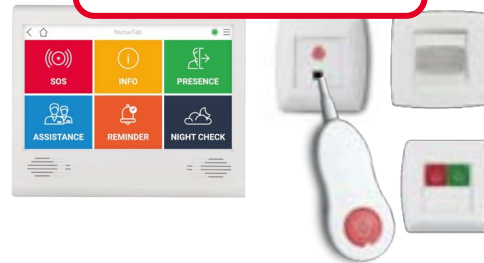
ENTRY LEVEL



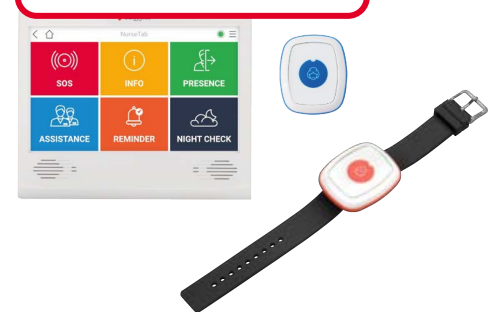
ADVANCED



ADVANCED



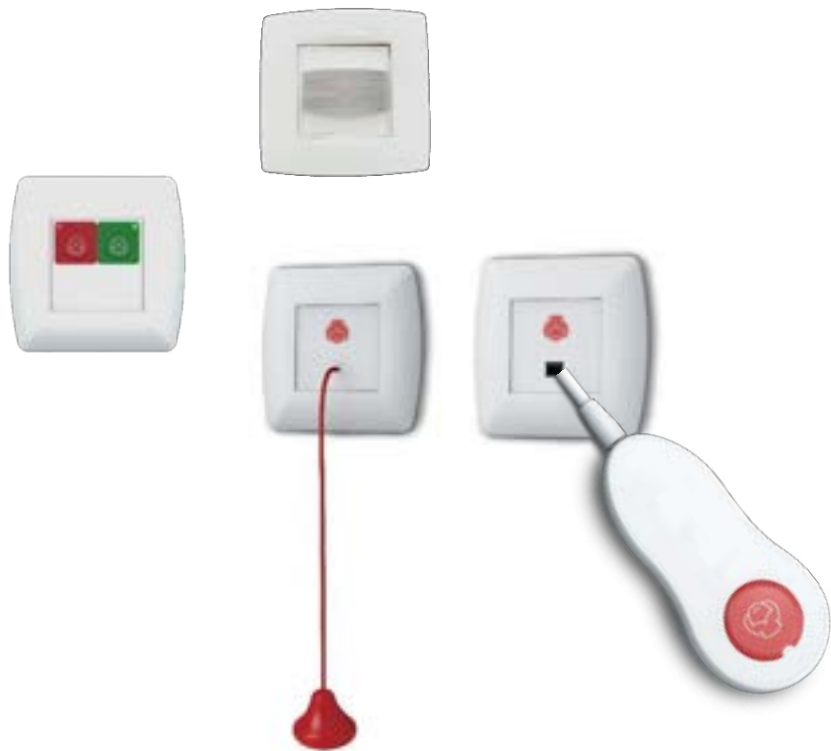
ADVANCED



Entry level IP Nurse Call System wired



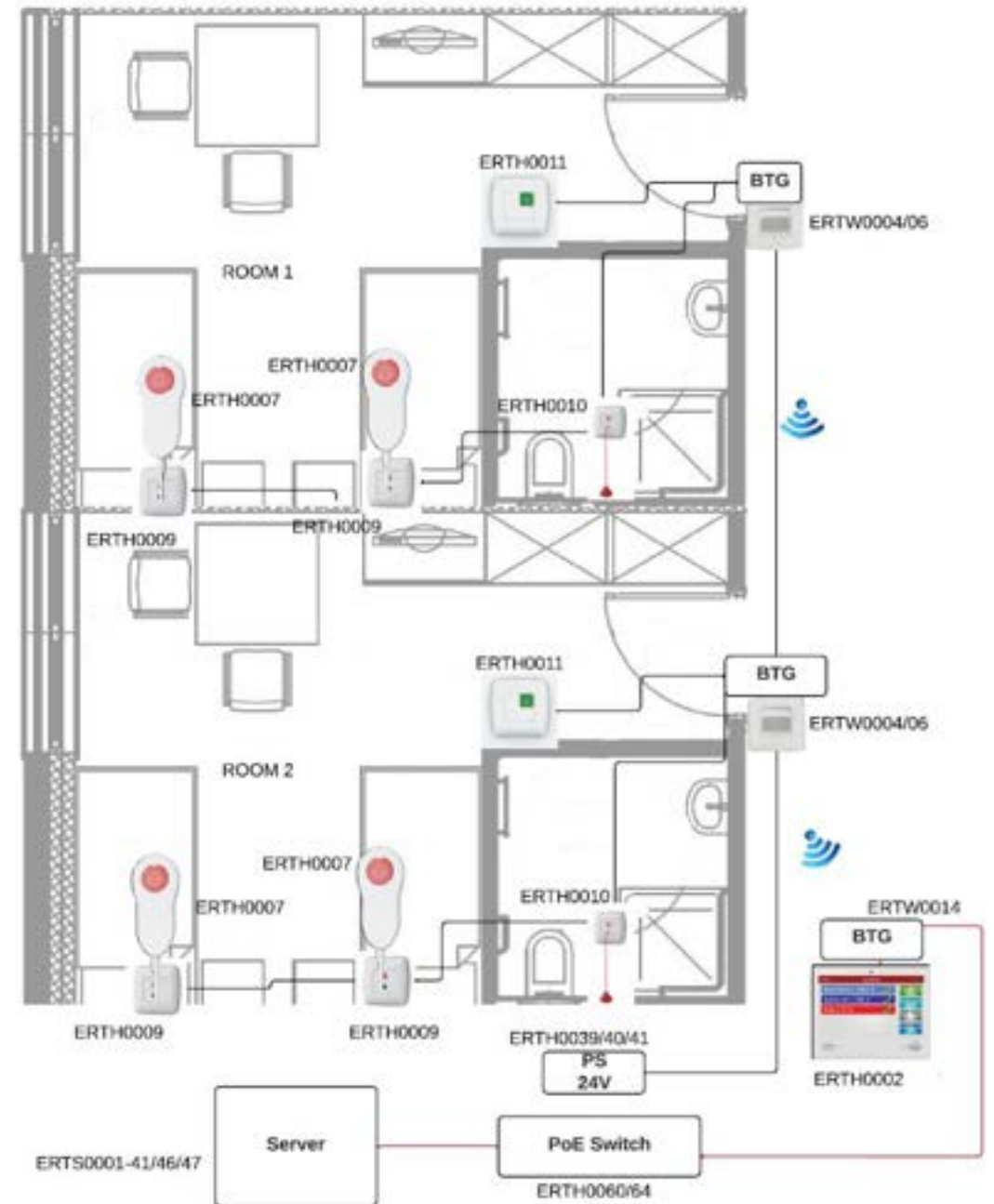
Entry level IP Nurse Call System wired



- **IP based** nurse call system
- Enables **remote control**
- Corresponds to **security standards** for nurse call system – **certified with DIN VDE 0834 standard**
- All units are **continuously monitored**
- **Reporting**
- **Forwarding calls** to various end-devices
- **Different call levels** (call – assistance – doctor call ...)
- Enables **upgrade with the most advanced option** (NurseTab) in the future

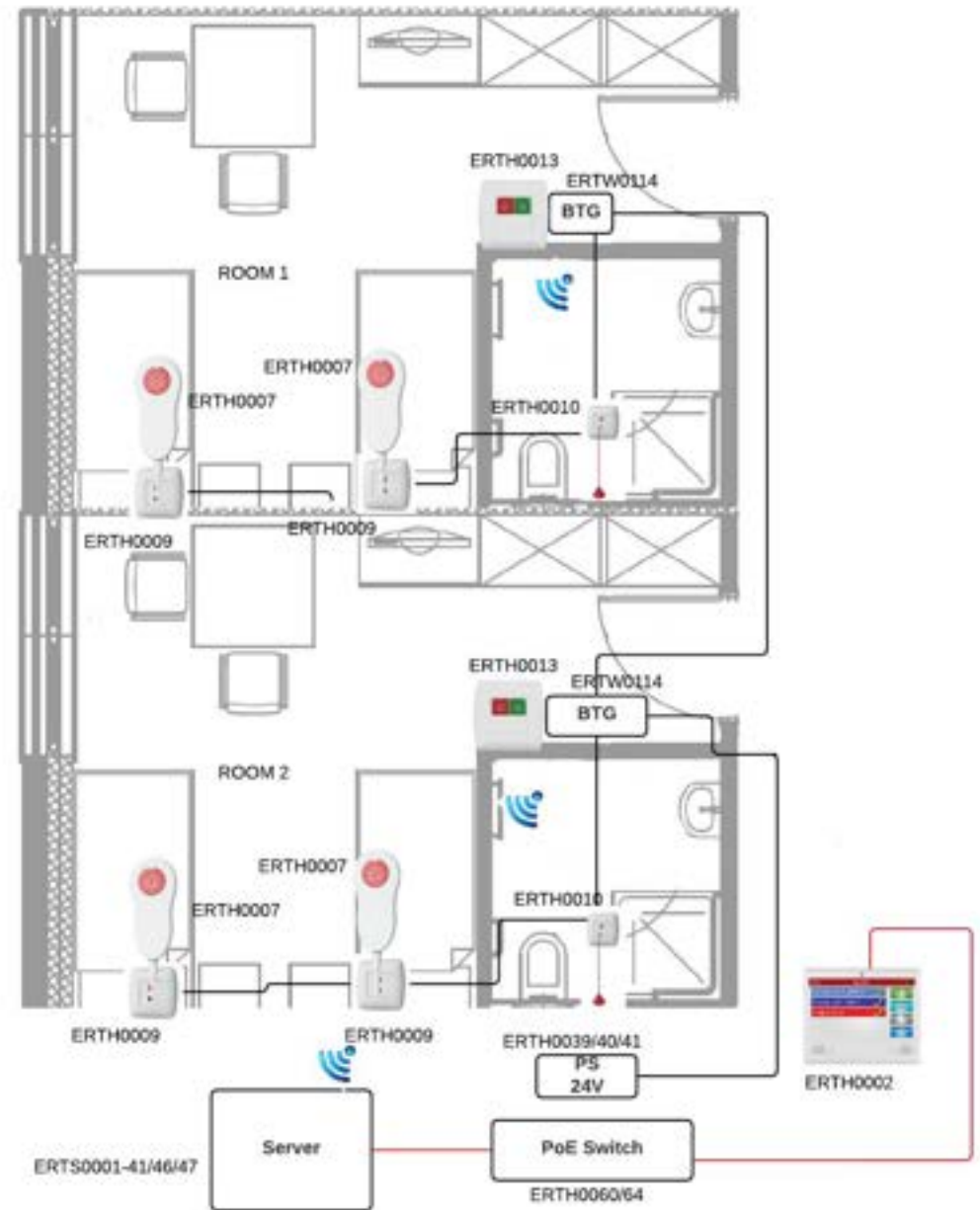
Room connection example

Entry level IP nurse call system

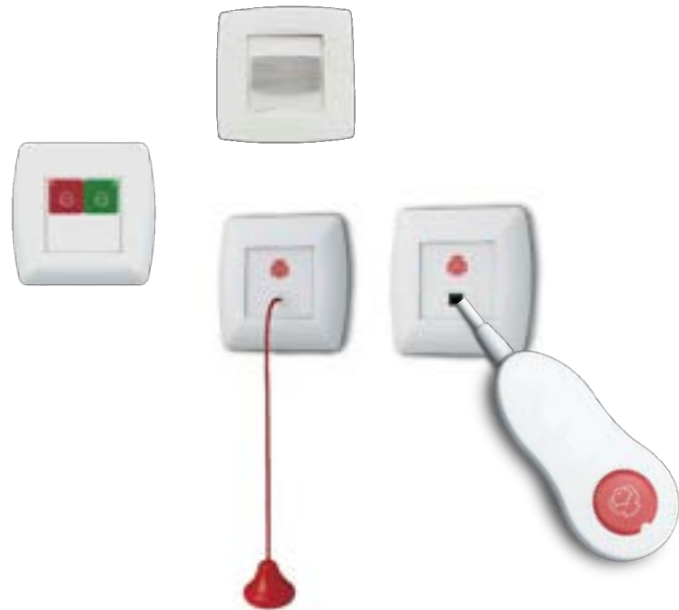


Room connection example

Entry level IP nurse call system –
wired nurse call buttons and
WIFI BTG



Wireless IP Nurse Call System



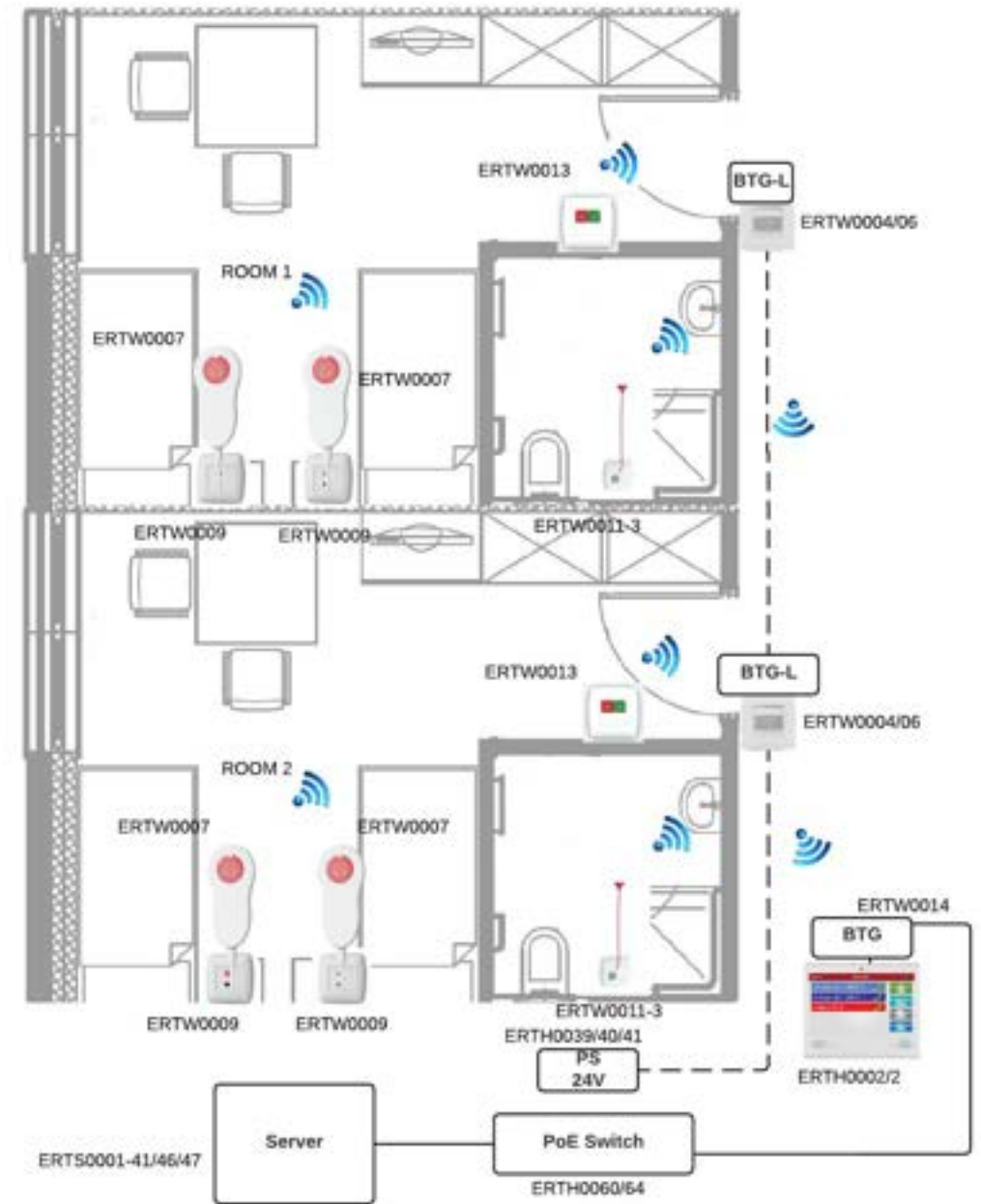
Wireless NurseCall System



- Wireless = special **bluetooth technology** developed for nurse call system
- **Monitored calls:** Much higher security for calls receiving with wireless solution compared to most other wireless systems
- All units are **continuously monitored – best in class!!** (most other wireless solutions 1x per 24 hours)
- Corresponds to **security standards** for nurse call system – **certified with DIN VDE 0834 standard**

Room connection example

Entry level IP nurse call system - wireless nurse call buttons



Wireless NurseCall System

Wireless wristband



- Enables calls for patient / resident **regardless of their location** (shower, room, corridor, dining room ...)
- **Waterproof IP67**
- Battery duration: more than **2 years**
- Provides **location** of the patient / resident
- **Integration with wireless sensors (movement, door ...)**
- **Reporting**
- **Different options of installation** (basic-advanced)

Security and identification for nurses

Wireless NurseTag



- **Assistance call**
- **Reset** of wristband call
- Waterproof **IP67**
- Battery duration: **1-2 years**
- Provides **location of the nurse**
- Provides **identification of the nurse**

Solutions



**RTLS AND
DEMENTIA
SYSTEM**

**FALL
PREVENTION
SYSTEM**

RTLS and dementia system



- **Positioning** of the wristband wearer
- **Dementia gateways** to monitor exits, elevators etc.
- Gateways can also be installed **outwards**
- **More security and freedom** for people with dementia

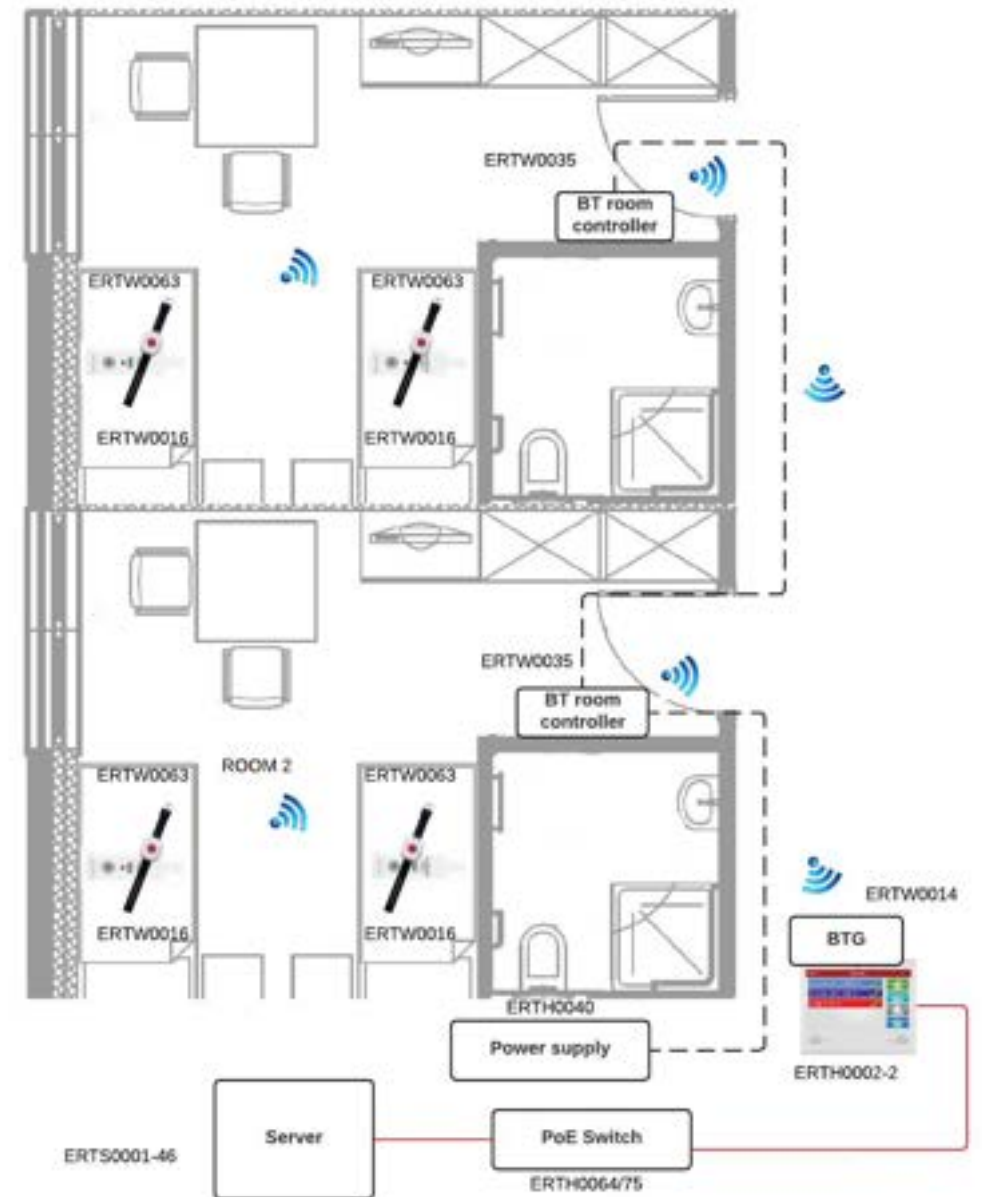
Fall prevention System



- Wireless BED SENSOR (under mattress) –
- Wireless FLOOR MAT
- Wireless MOTION SENSOR

Room connection example

Entry level wireless nurse call system



Advanced IP NurseCall System (wired or wireless)

Who?

When?

What?

How long?



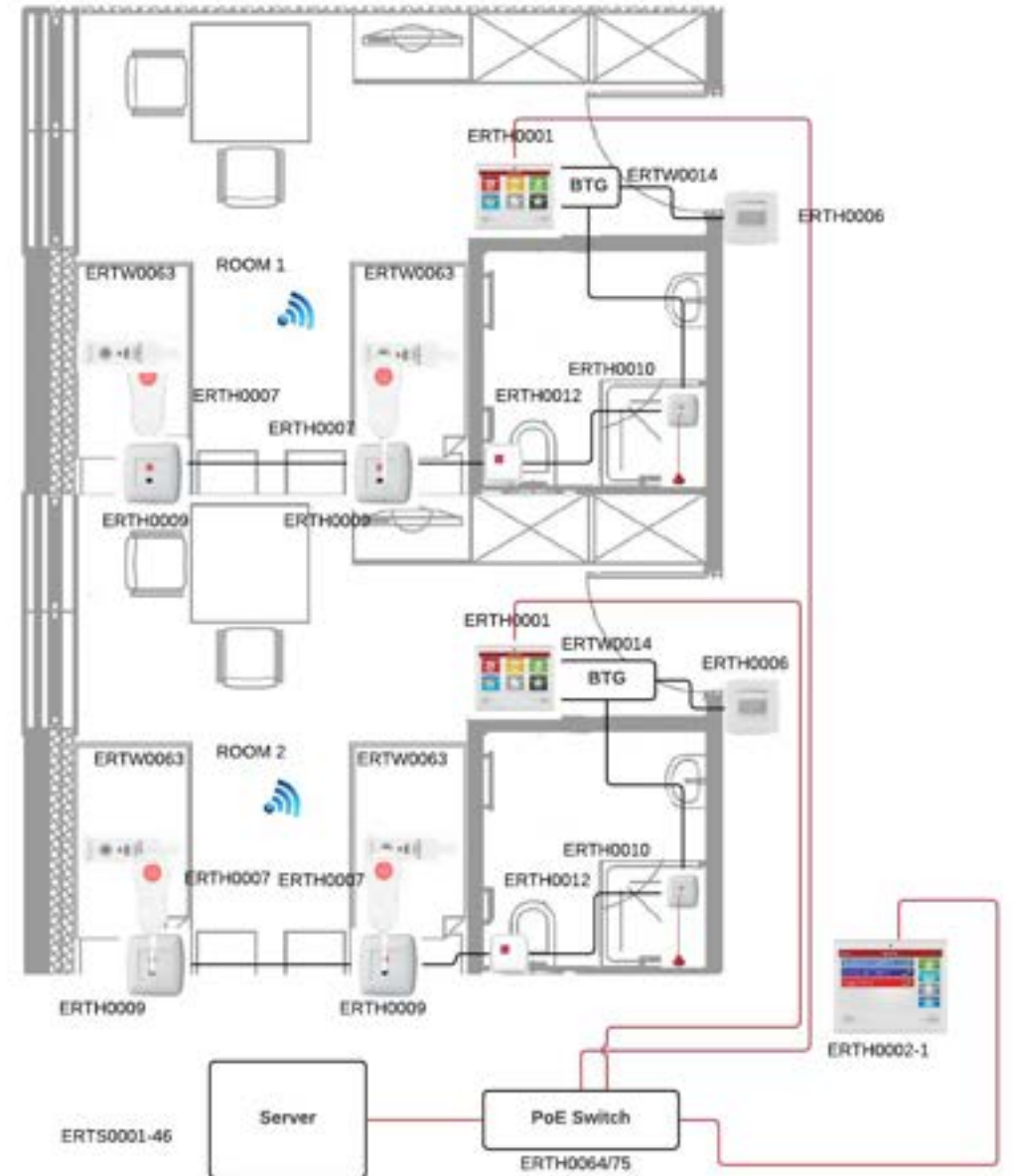
Advanced IP NurseCall System



- **ID protected** presence acknowledgment
- **Emergency** call
- **Assistance** call
- **Presence** confirmation
- ID protected **code blue call**
- **Night check** of the patients
- Setting **reminders** for nurses
- Display of **calls from other rooms**
- **Speech connection** room-wise (to the nurse station terminal/smartphone app)
- Selecting the **reason of a call** when exiting room (for later data analytics)
- high security – **certified with DIN VDE 0834 standard**

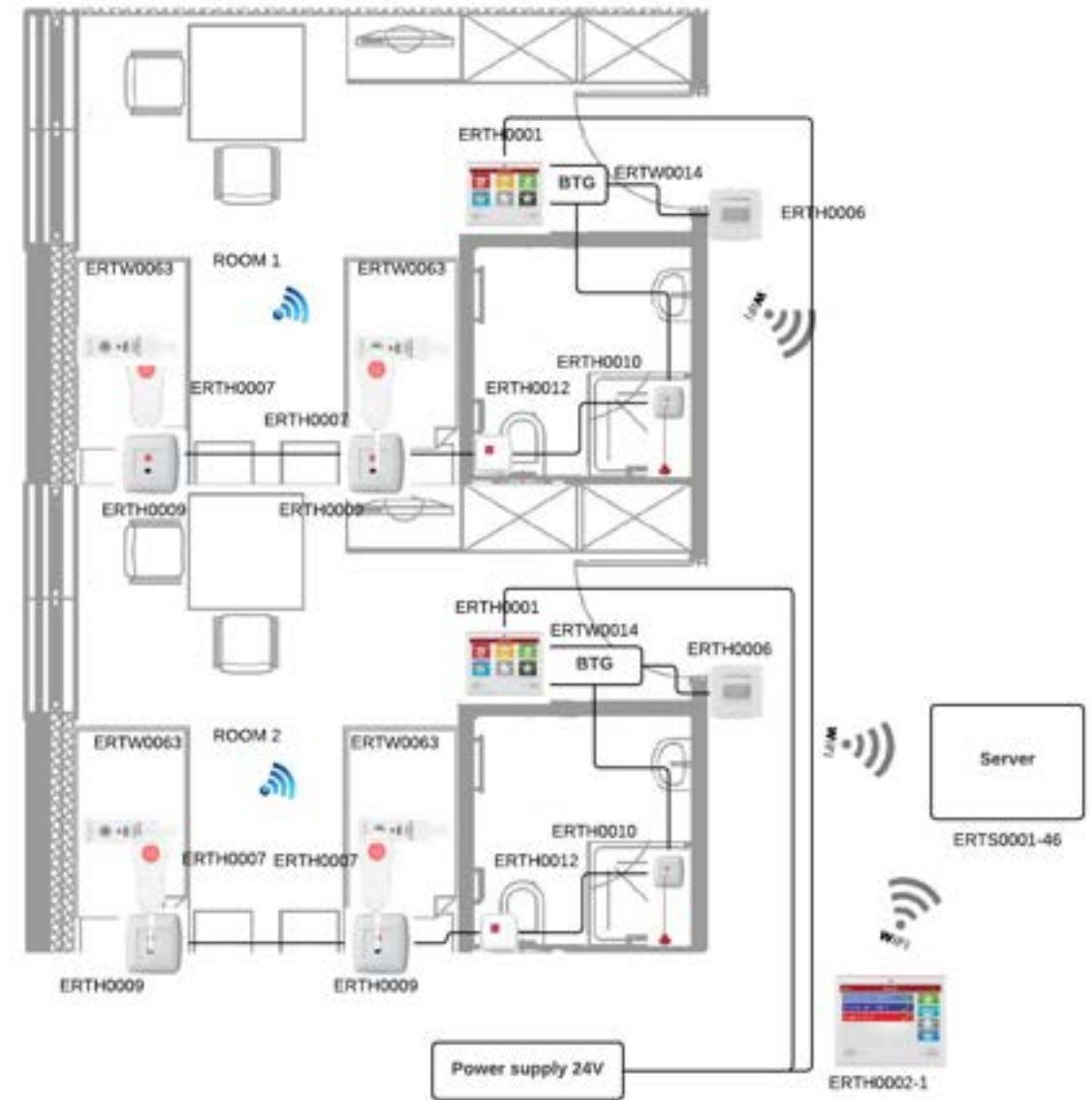
Room connection example

Advanced IP nurse call system - wired



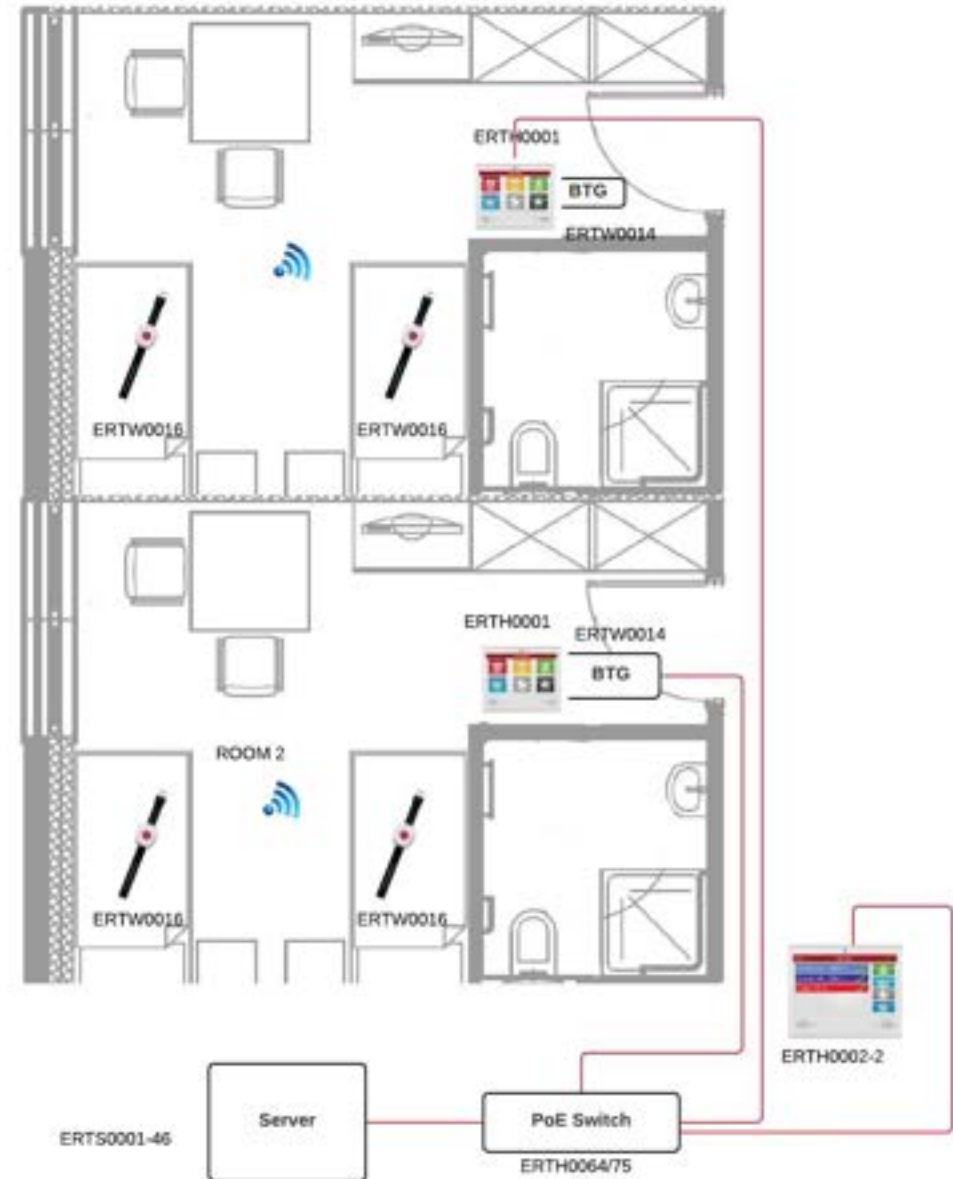
Room connection example

Advanced IP nurse call system –
wired + wifi



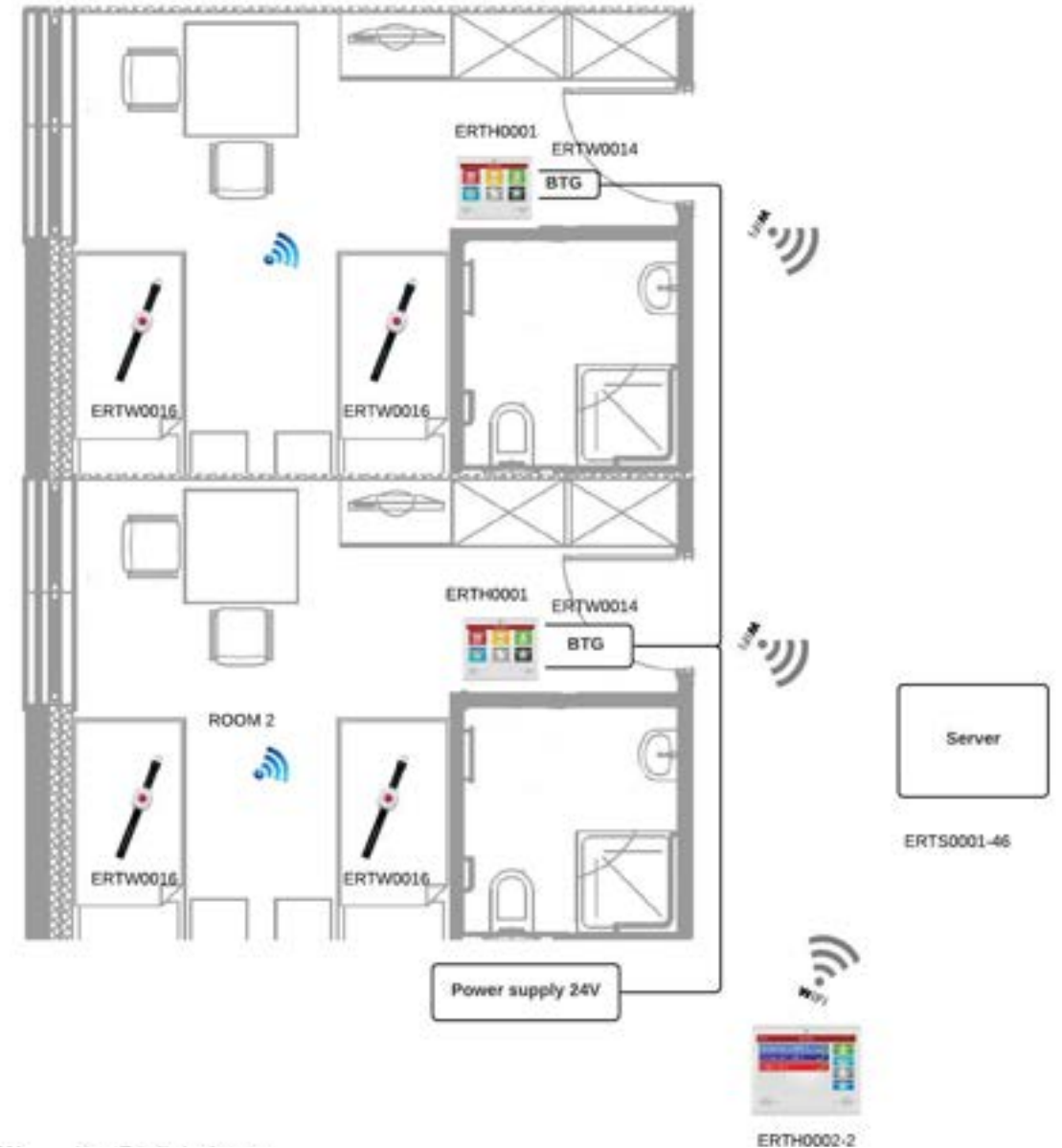
Room connection example

Advanced IP nurse call system - wireless



Room connection example

Advanced IP nurse call system – wireless + wifi



Call forwarding



Web interface for call management



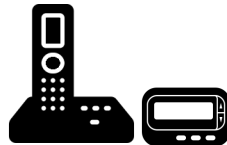
NurseTab nurse room terminal / with holder / handset



Door lamp



Smartphone app
iNurse



DECT / paging /
telephone system)



Corridor display
InfoTab



Floor map display of
calls

- **24/7 alert pathway**
- **Minimizing delays** in the response time
- **A feedback mechanism** on the call response for those in the emergency situation and for the emergency responders.
- **Avoiding the duplication** in response
- Handling **unlimited number of multiple events** occurring simultaneously
- Informing **the most appropriate medical specialist** of the nature and location of the emergency

iNurse

Smartphone app for nurses



- See list of **active nurses**
- See list of **nurses in the room**
- **Response** to nurse call
- **Mute** a nurse call
- **Communicate** with nurses / patients in rooms
- **UNIQUE - Integrated SIP communication** (communication between nurses on iNurse and with rooms – NurseTab)

InfoTab

Smart corridor display



Patient room



Nurse Station



Corridor





Why NurseCare?

There's nothing quite like it.

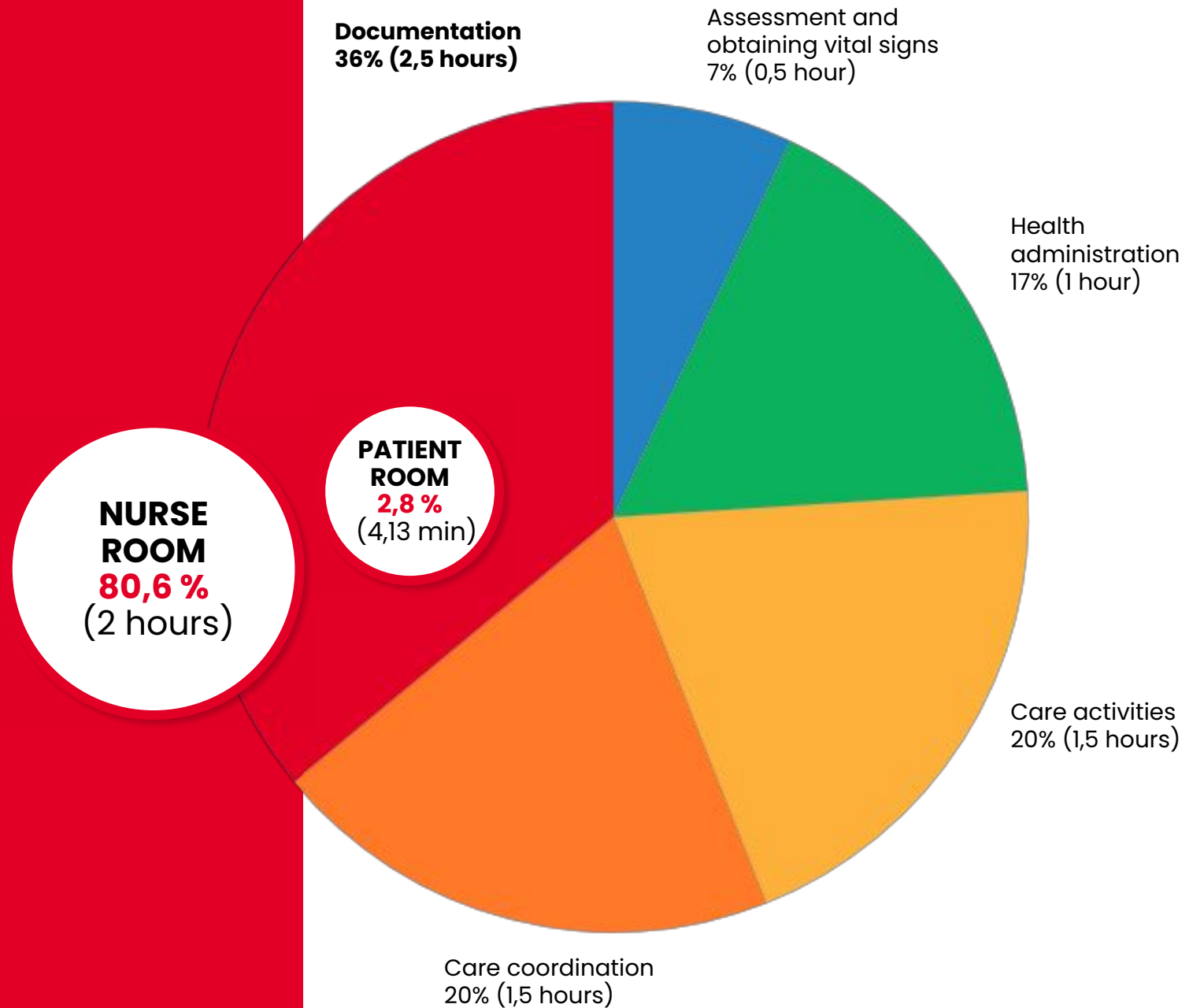
Modular solution

Nurse call

Digital nursing documentation



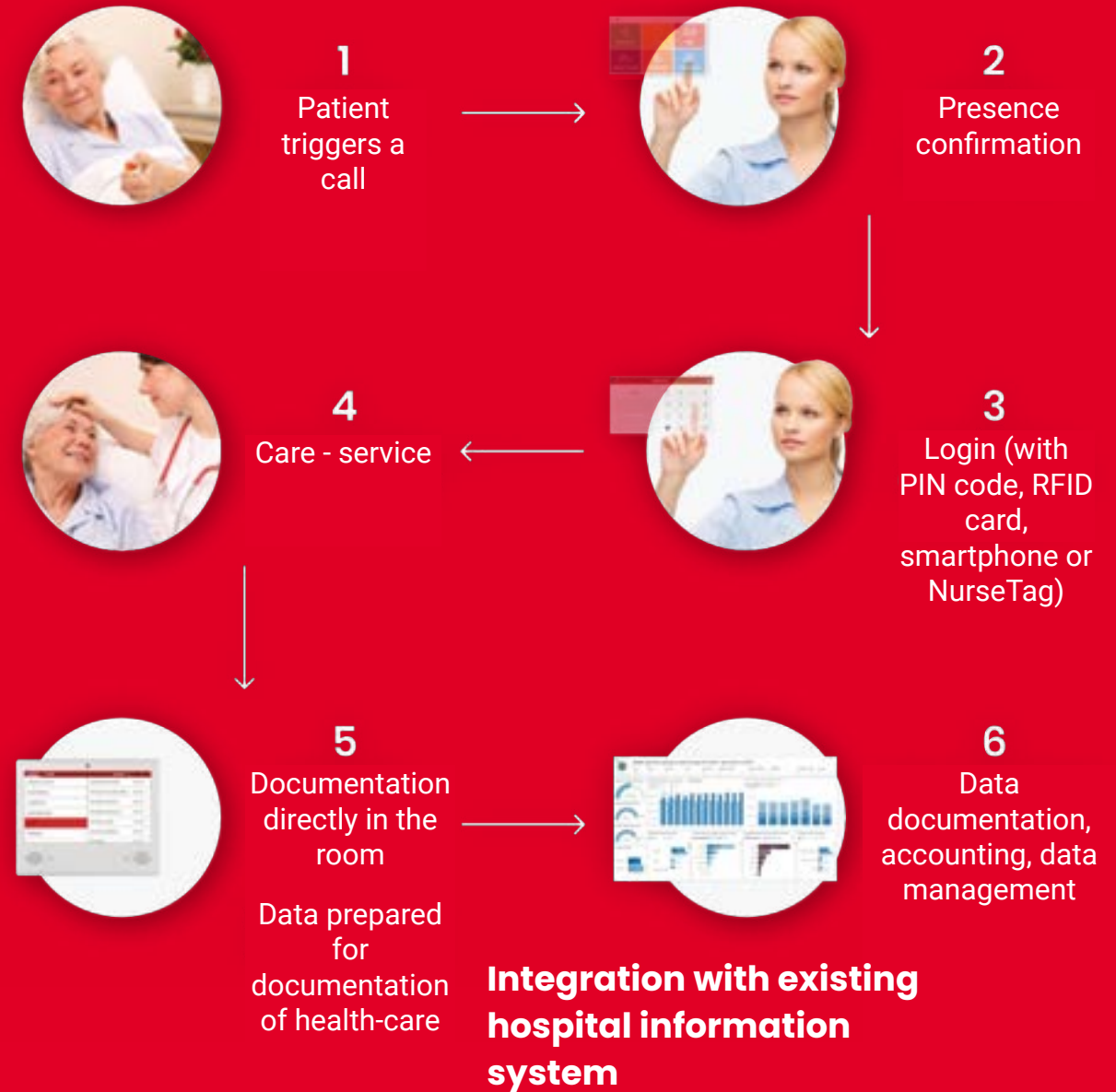
How Nurses spend their working day



The Future of nursing documentation



Nursing documentation directly in the patient room



E-documentation of ALL services directly in the room



Health-care data



Cleaning



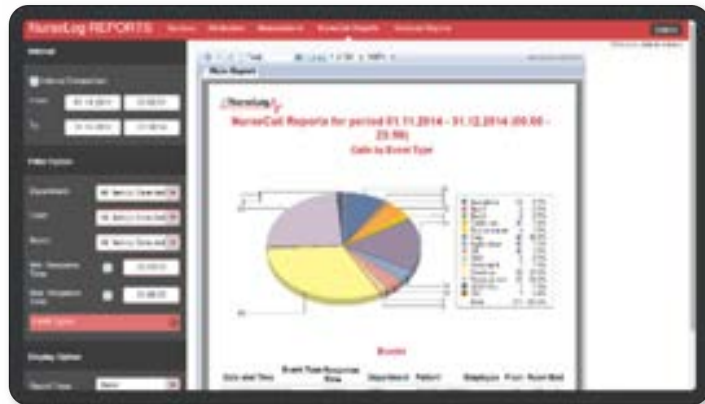
Maintenance

Observation, planning and evaluation



Advanced reporting system

Data collation and analysis of the emergency call and response events is being done on a very high level.



- **RESPONSE TIMES** (departments, patients ...)
- **PRESENCE TIME IN PATIENT ROOM**
- **NUMBER OF CALLS**
- **TRENDS** (BASED ON DAYS IN WEEK, SHIFTS ...)
- **DEVIATIONS FROM EXPECTATIONS**
- **AUTOMATED REPORTS**
- **NIGHT CHECK MONITORING**
- **MONITORING HEALTH-CARE KPI**

Fully integratable alarm-management platform

Fully integratable with other hospital systems by enabling a large integration possibilities with other communication systems in the building.

- Sending alarms on **various devices within seconds**
- Handles **multiple events occurring simultaneously**
- It can be **seamlessly introduced into existing operating theaters, emergency departments and intensive care units** throughout the hospital.



Safety

IP nurse call
certified with
DIN VDE 0834
standard
Part 1 and 2



ÖVE Austrian Electrotechnical Association
Eschenbachgasse 9 | 1010 Wien | Austria
ZVR: 327279890 | www.ove.at



ÖVE Certification
Kahlenberger Str. 2A | 1190 Wien | Austria
T +43 1 370 58 06 | certification@ove.at

CERTIFICATE

Certificate No.: **90134-001-01**

Valid from: 2022-06-10
until: 2025-06-10

Issued for



The Call System for hospitals and similar institutions

NurseCare system

has been found in conformity with the requirements of

ÖZS-Richtlinie RA 01:2020-01-07
DIN VDE 0834-1:2016-06
DIN VDE 0834-2:2019-02

The above mentioned company is entitled to use the ÖZS Label
for the Call System as specified in the Annex.

The Annex is an integral part of the ÖZS Certificate.

Österreichischer Verband für Elektrotechnik
Head of ÖVE Certification

T. Neumayer
Digitally signed by T. Neumayer
E-mail: t.neumayer@ove.at
Dipl.-Ing. T. Neumayer



Wien, 2022-06-10

ÖVE Certification

Accredited by the Federal Ministry for Digital and Economic Affairs as Certification Body for products
within the scope as given in the official decree and published under <https://akkreditierung-austria.gv.at>

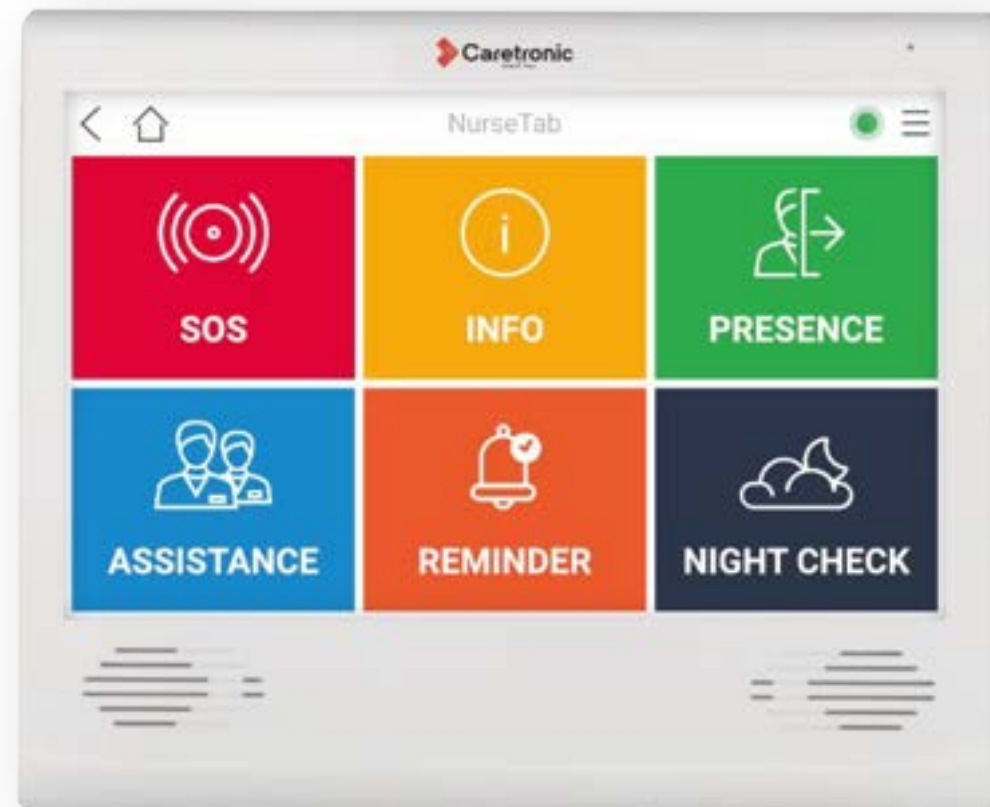




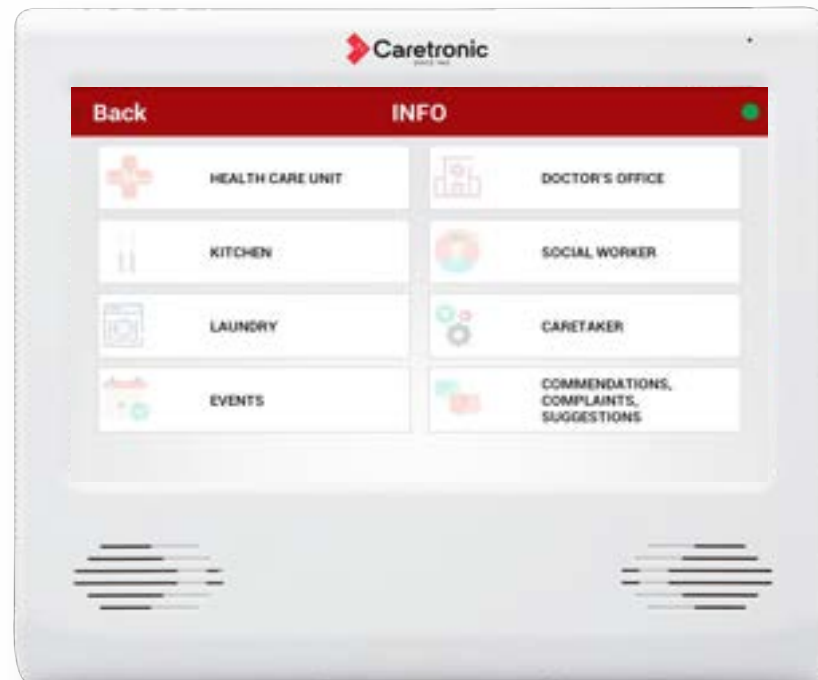
Why NurseCare?

There's nothing quite like it.

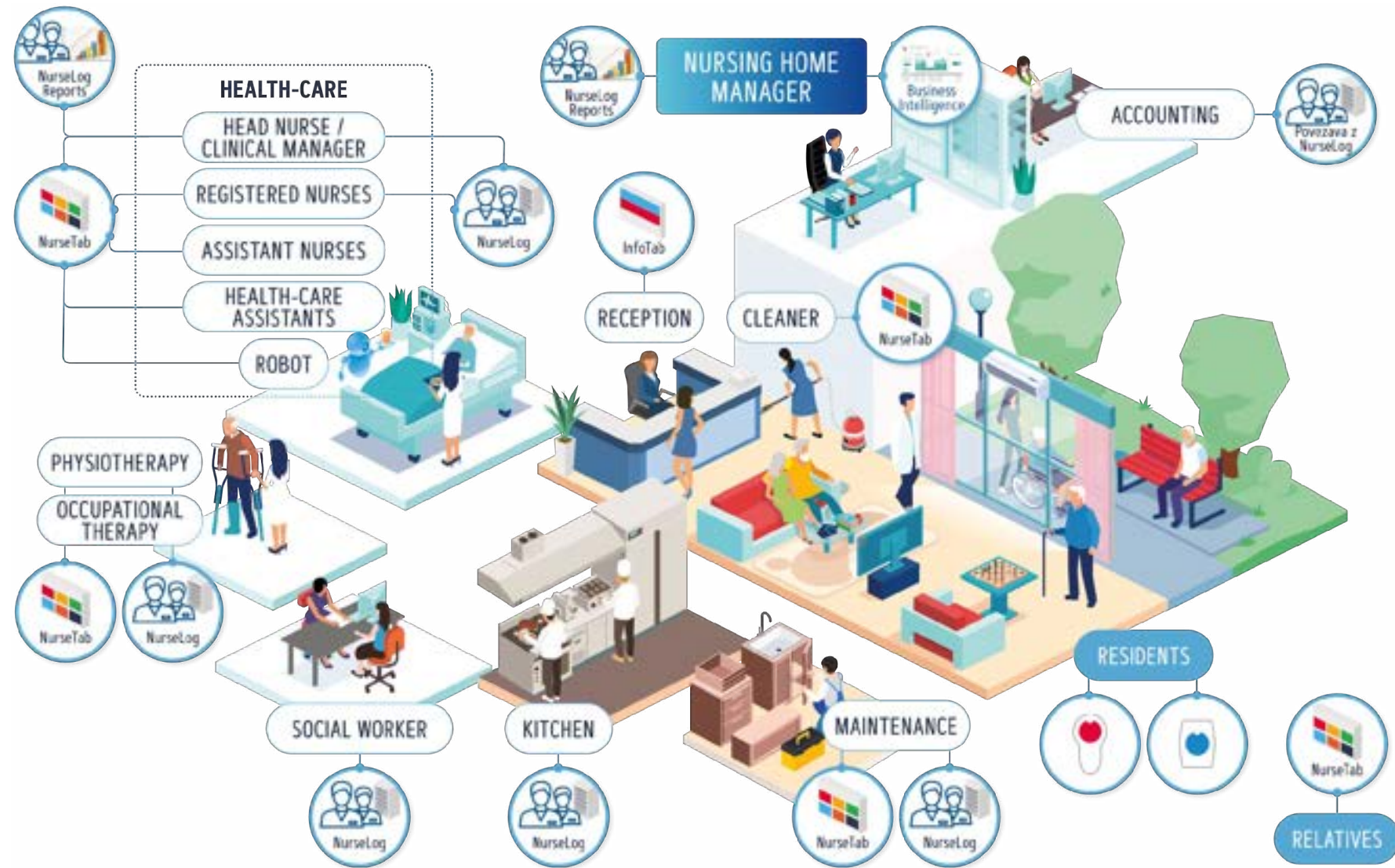
Info point



INFO point for patients and relatives



One system to cover complete health care institution



Solutions



**PATIENT
ENTERTAINMENT
SYSTEM**

Patient entertainment system

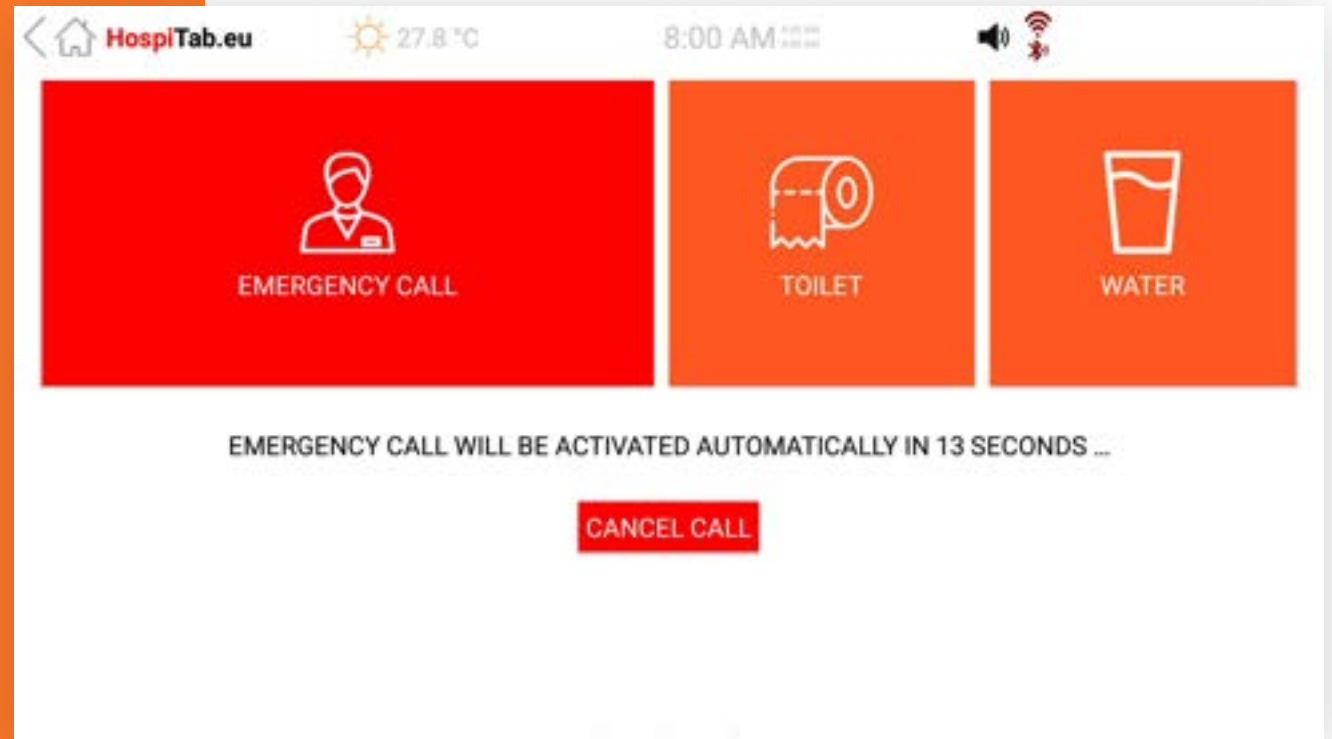


- Nurse call
- Service call
- Phone calls
- Smart room control
- Internet access
- Games
- Info (weather, hospital information ...)

Patient entertainment system



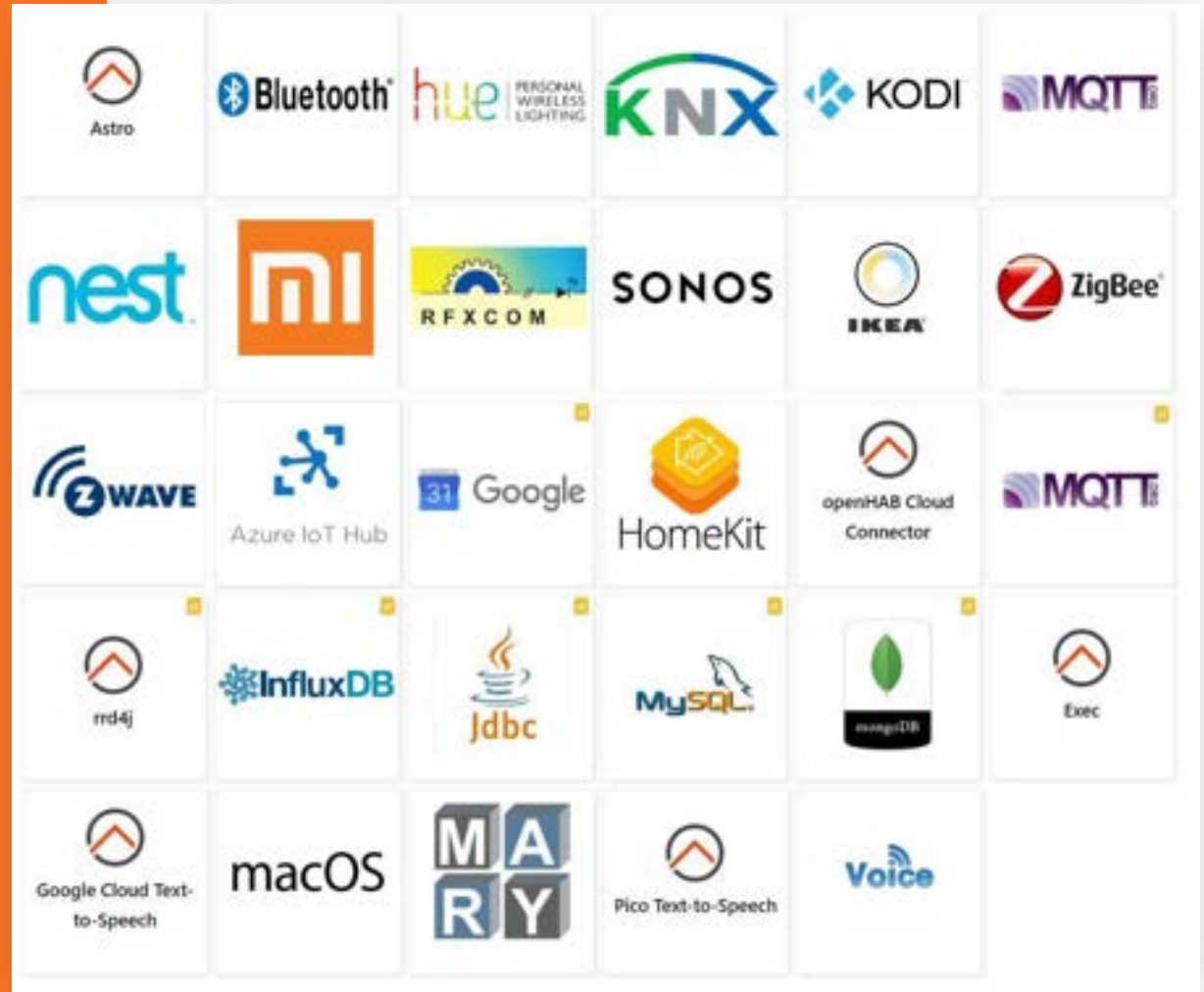
Patient entertainment system



Hospitab

SmartHome integration

- Integrated smarthome platform
- 1000+ supported systems



Solutions



**SMART
TELE CARE
TELE HEALTH
SYSTEM**

Smart HomeTab system for independent living



Let elderly feel secure for a longer time

HomeTab is an advanced IP touch-screen carephone.



IP touch-screen carephone

Wireless wristband

- emergency call
- fall detection
- GPS location
- mobile connection outside the home
- it can also be worn as a pendant
- waterproof IP67

Let technology be a helper not an obstacle

User interface, specially adapted for elderly

- big clear colorful buttons
- adjustable volume
- easy to use and manage



Let elderly stay connected with their loved ones

Predefined contacts that user can easily call directly from the carephone.



Let elderly feel more independent



Food
ordering

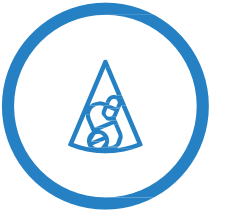


Access to
the internet



Smart home
control

Let no event be forgotten



It reminds user to take medications at the right time



Gives a reminder about doctor appointment



Never forget about the upcoming birthday

Let everyday be fun and motivational

Challenging games, beneficial for
cognitive health to improve the ability
to think clearly, learn and remember



Let all vital signs be under control

Automatic transmission of data to the HomeTab device and backbone system.

Monitoring and alerting



Let elderly live independent for a longer time

Visual and audio alert for the user and caregiver.



Let call for help be easy and accessible anytime

VOICE RECOGNITION
For emergency call triggering

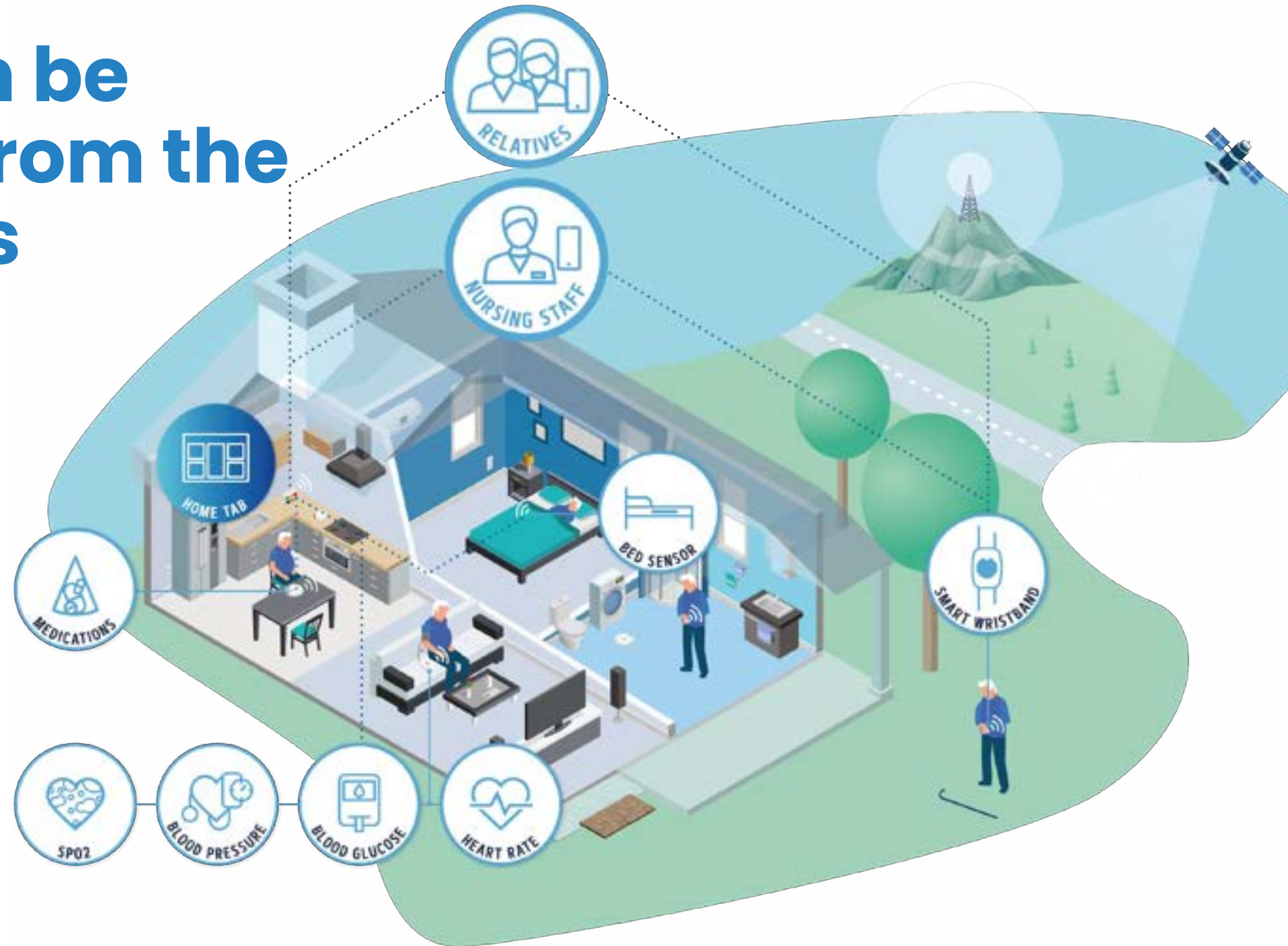


Let service documentation be fast, easy and well organised



Let burden be released from the caregivers

Caregivers receive instant alerts when some event needs an action and can therefore live with ease of mind that their loved ones are in good condition and taken care of also when living independent at home.





References

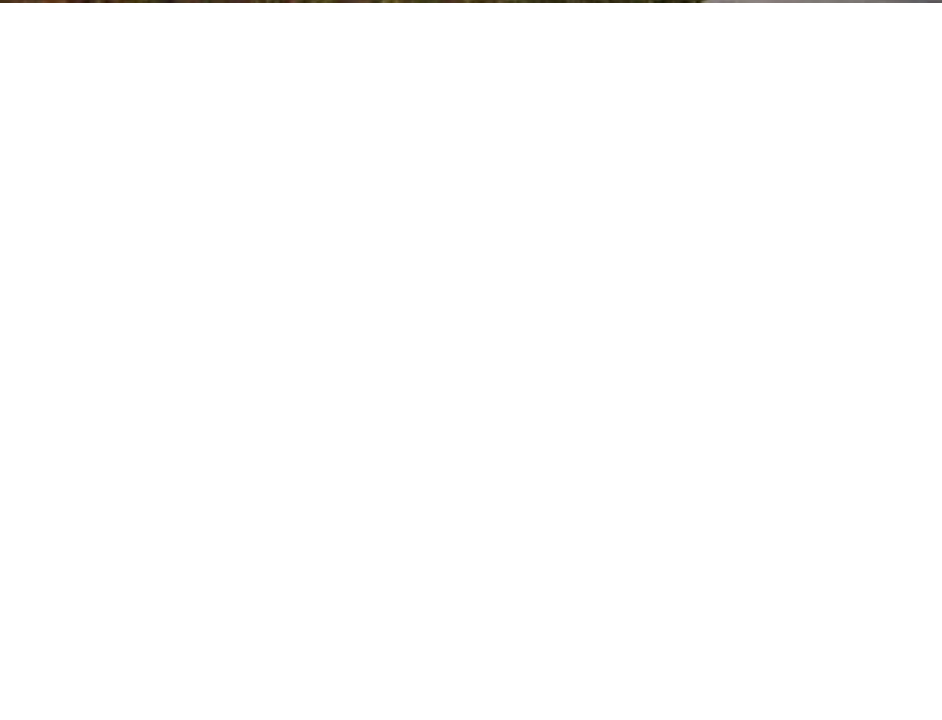
















Video References

Reference 1

Reference 2

Reference 3

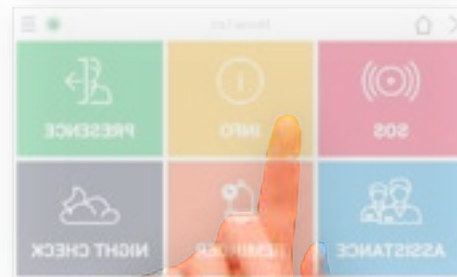
Reference 4

Reference 5

Reference 6

Promotional video





Caretronic d. o. o.
Štirnova 8, 4000 Kranj
Slovenia

www.caretronic.com